

# SOUTHERN CROSS UNIVERSITY

## ASSIGNMENT COVER SHEET

For use with online submission of assignments

Please complete all of the following details and then make this sheet the **first page of each file of your assignment – do not send it as a separate document.**

Your assignments must be submitted as either **Word documents, text documents with .rtf extension or as .pdf documents.** If you wish to submit in any other file format please discuss this with your lecturer well before the assignment submission date.

Student Name:

Student ID No.:

Unit Name: **Database Systems**

Unit Code: **CSC72001**

Tutor's name:

Assignment No.: **Assessment 2**

Assignment Title:

Due date:

Date submitted:

Declaration:

*I have read and understand the Rules Relating to Awards ([Rule 3 Section 18 – Academic Misconduct Including Plagiarism](#)) as contained in the SCU Policy Library. I understand the penalties that apply for plagiarism and agree to be bound by these rules. The work I am submitting electronically is entirely my own work.*

Signed:  
(please type  
your name)

Date:

# ASSESSMENT TWO

# REPORT

BY <Insert your name>

## Table of contents:

### Contents

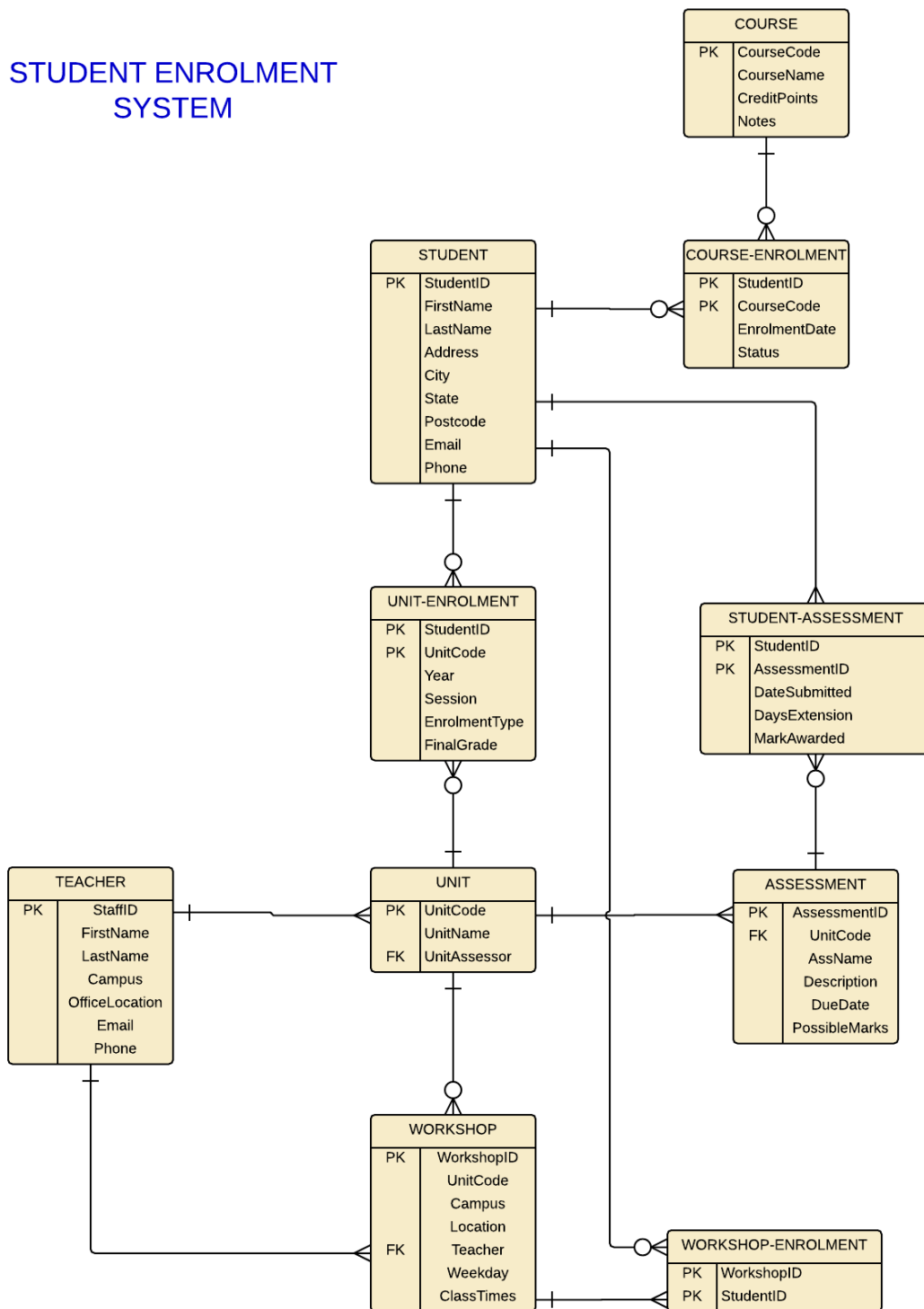
Table of contents: .....	3
Entity Relationship Diagram .....	4
Part A: Analysis.....	5
1. Client Business Rules.....	5
2. Assumptions Made .....	5
3. Naming Conventions.....	5
4. Data Types Chosen.....	5
Part B: Testing Queries .....	6
B.6.1 Workshop Enrolment List .....	6
B.6.2 Workshop Count List.....	6
B.6.3 Student Transcripts.....	6
B.6.4 Student Assessment Totals .....	6

**<Remove this text before submission of your assessment>**

<After you have completed your assessment, right-click on the table of contents above and click "Update Field" then "Update Page numbers only". This will build the table of contents for you.>

# Entity Relationship Diagram

## STUDENT ENROLMENT SYSTEM



## Part A: Analysis

---

### 1. Client Business Rules

- <rule 1>
- <rule 2>
- <rule 3>
- <rule 4>

### 2. Assumptions Made

<information about your assumptions goes here>

### 3. Naming Conventions

To keep consistency, the database will use strict naming conventions that will allow easy implementation and maintenance of the database when completed. The following conventions apply:

- <convention 1>
- <convention 2>
- Etc

### 4. Data Types Chosen

<Information about why you have chosen the data types you have chosen for your database.>

## Part B: Testing Queries

---

### B.6.1 Workshop Enrolment List

Query:

Paste your actual query here (not a screenshot)

Result:

Paste a screenshot of your query results here. (Hint: Snipping tool in Windows may help)

### B.6.2 Workshop Count List

Query:

Result:

### B.6.3 Student Transcripts

Query:

Result:

### B.6.4 Student Assessment Totals

Query:

Result: